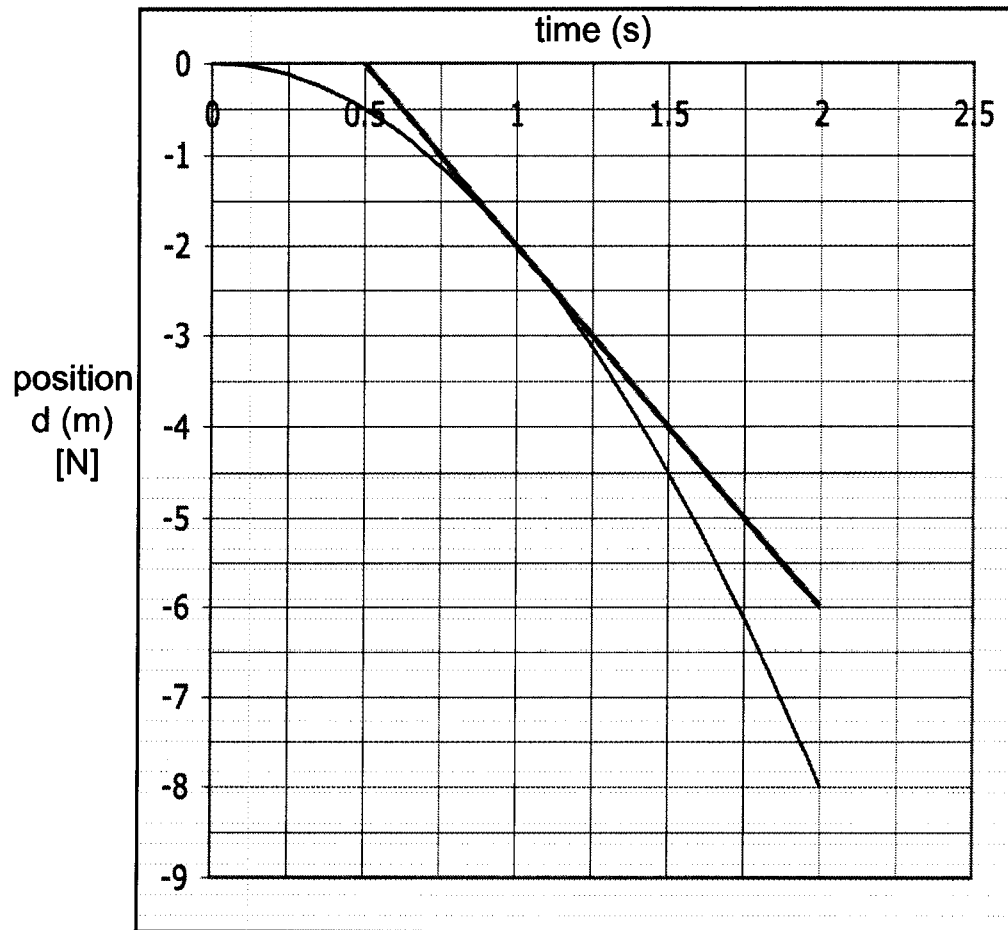
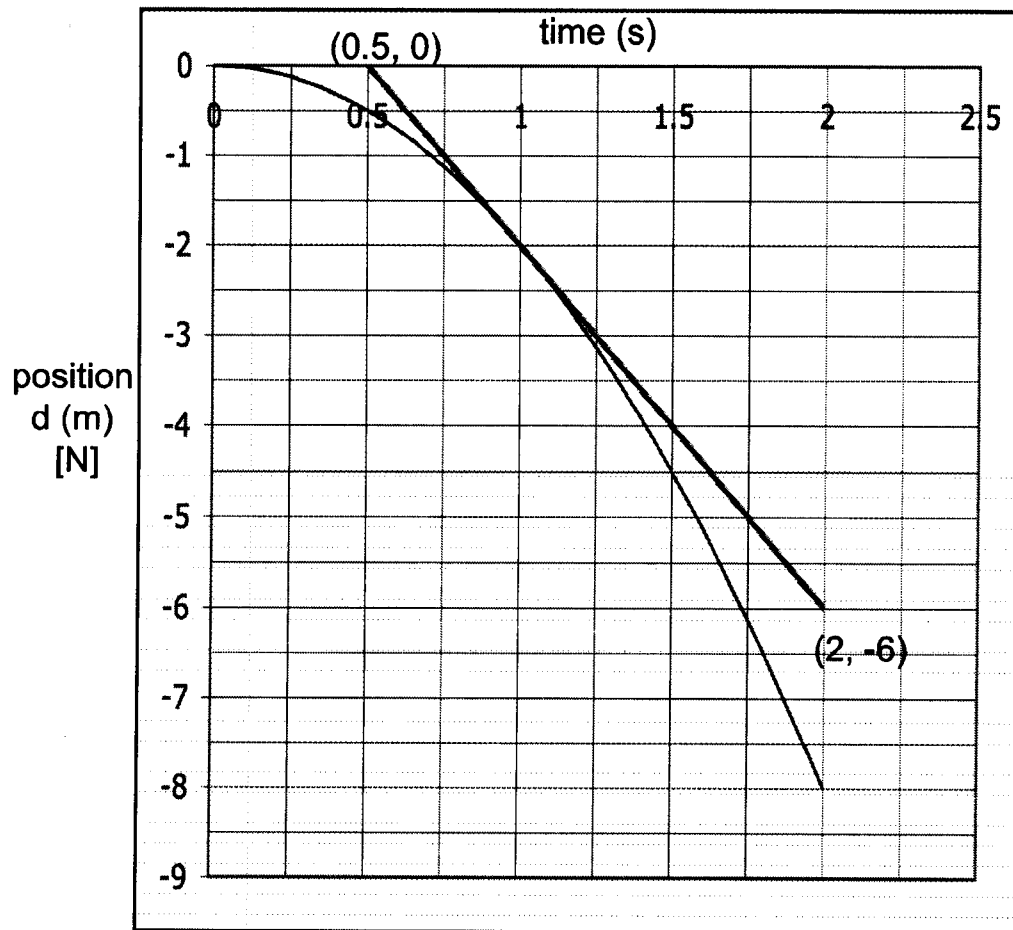


To calculate instantaneous velocity at 1 second, draw a tangent at 1 second.



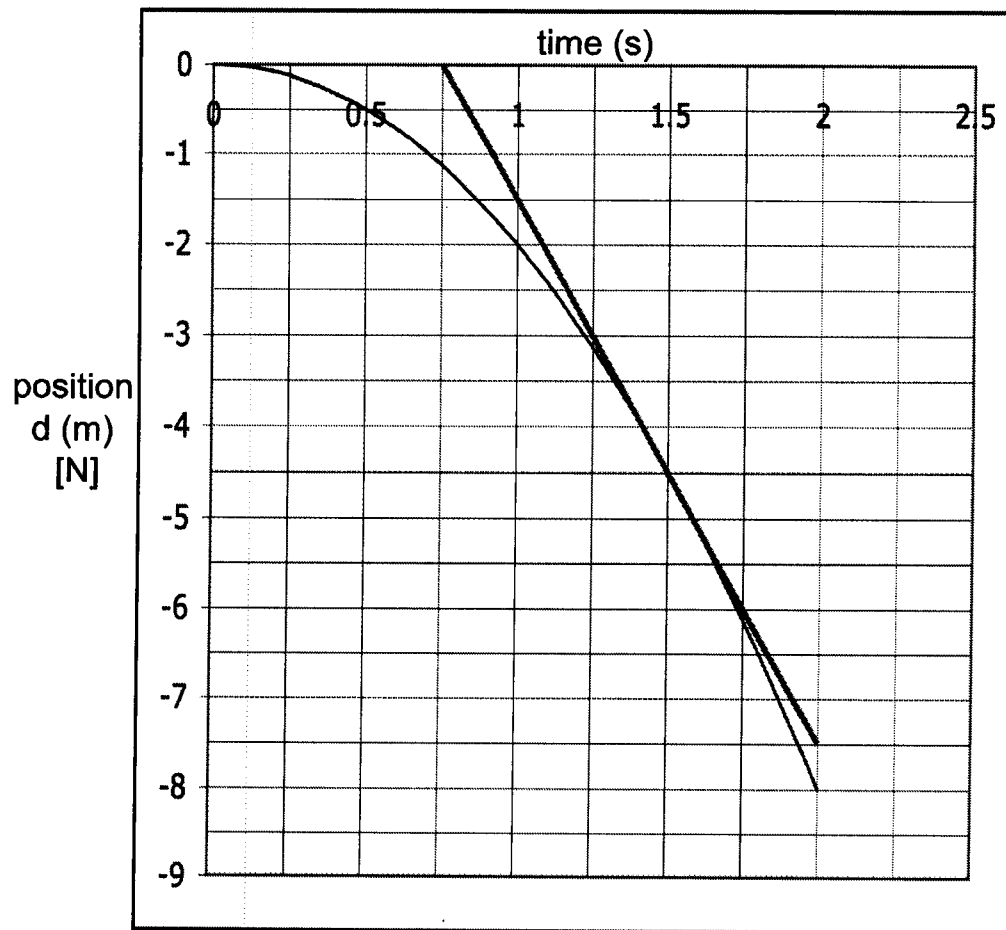
Choose two points that are easy to read on the tangent line and calculate the slope.



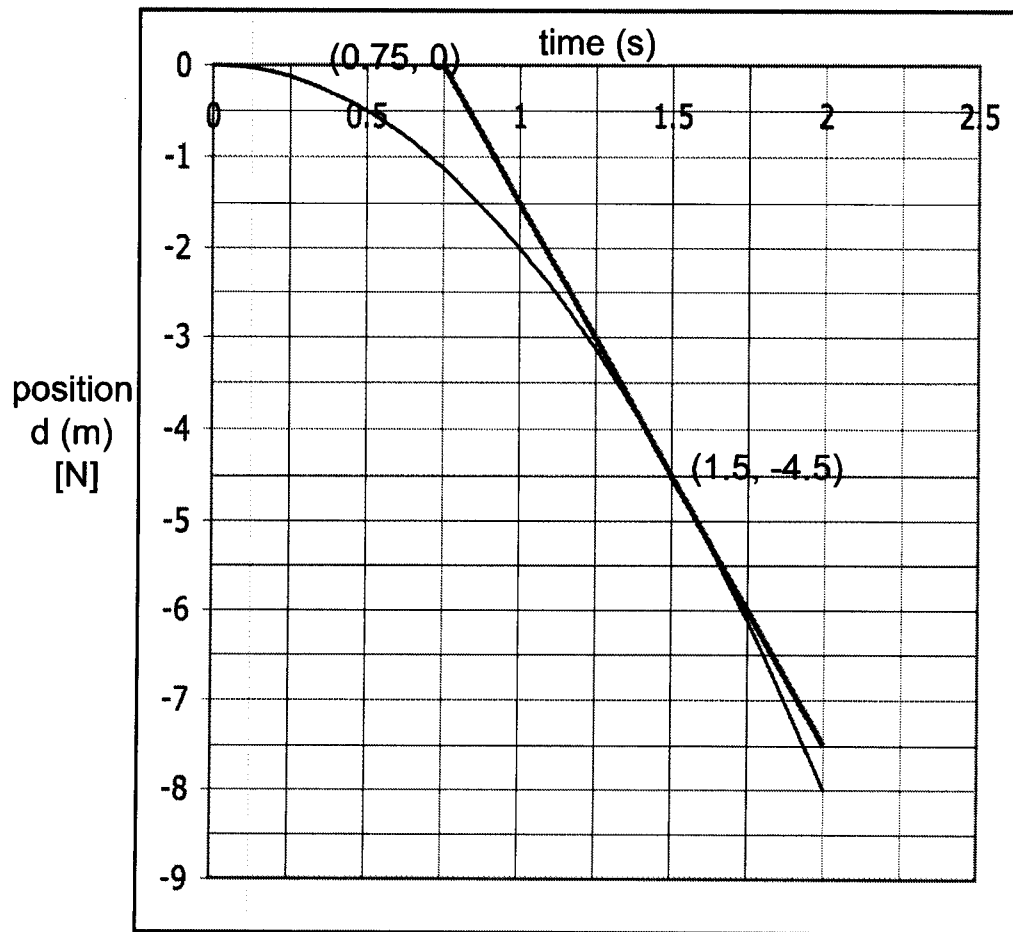
$$v = \frac{-6 - 0}{2 - 0.5}$$

$$v = -4 \text{ m/s}$$

To calculate instantaneous velocity at **1.5** seconds, draw a tangent at 1.5 seconds.



Choose two points that are easy to read on the tangent line and calculate the slope.



$$v = \frac{-4.5 - 0}{1.5 - 0.75}$$

$$v = -6 \text{ m/s}$$